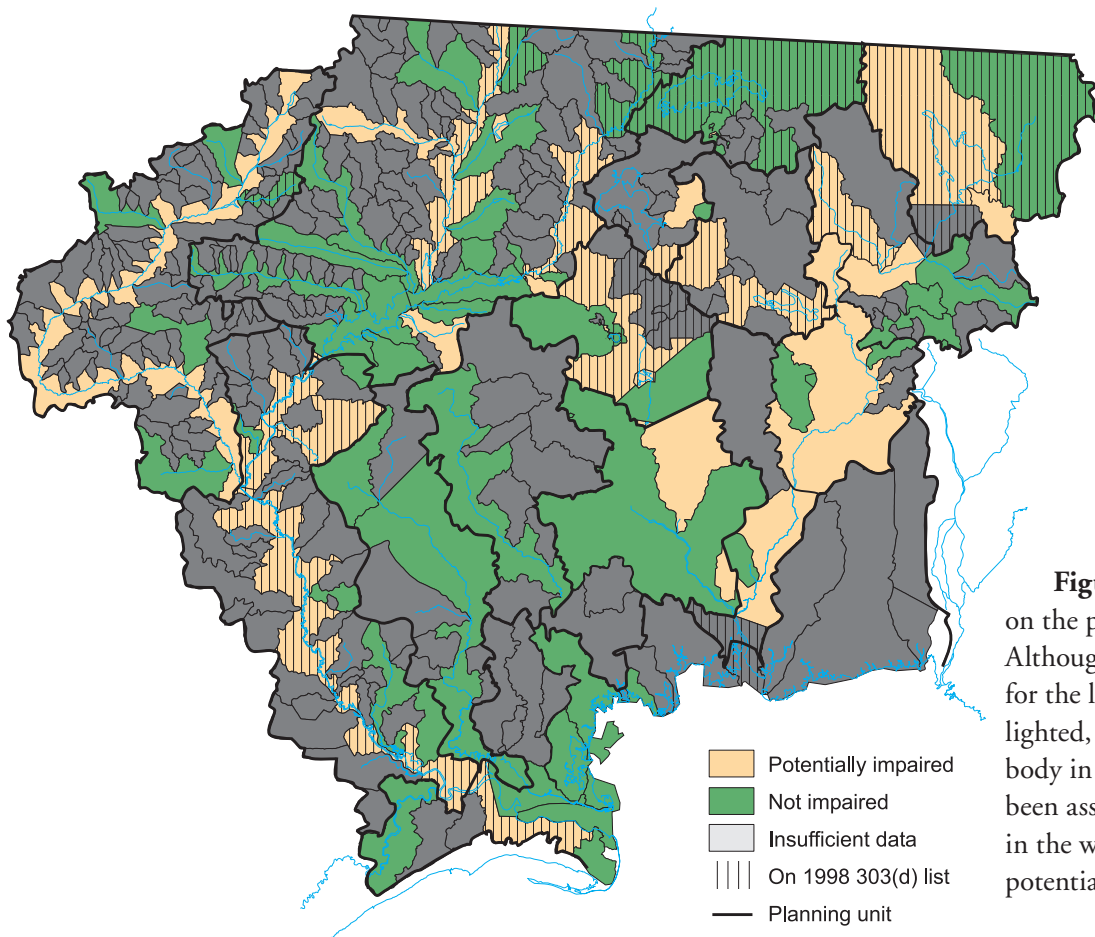




### The Planning List

The methodology used to develop the planning list follows the tenet of “independent applicability,” which means that a water will be listed if any of its designated uses are potentially impaired. As such, the planning list (see **Table 4.1**) can be thought of as a summary of any potential impairment noted in the assessment chapter. The table lists each waterbody, why it was listed as potentially impaired, and the parameters of concern. The table also states whether the water was listed on the 1998 303(d) list. As described in the introduction to Chapter 3, waters on the planning list must meet specific thresholds and data sufficiency and data quality requirements contained in Section 62-303, Florida Administrative Code. Waters that were previously on the 1998 303(d) list but for which there were insufficient data for an assessment are included on the planning list. Previously listed waters will also receive higher priority for monitoring and TMDL development. Waters that are not on the planning list either have sufficient data to determine that they are not impaired or they have insufficient data to make a determination.

The WBIDs on the planning list and on the 1998 303(d) list can be located in **Figures 3.2** and **3.3** of Chapter 3.



**Figure 4.1** shows waters on the planning list graphically. Although the entire watershed for the listed water is highlighted, only the main waterbody in the assessment unit has been assessed, and other waters in the watershed may not be potentially impaired.

*Figure 4.1: Planning List for All Causes of Potential Impairment Except Fish Advisories, with Overlay of 1998 303(d) List*  
 Note: Fish advisories are listed in the text.