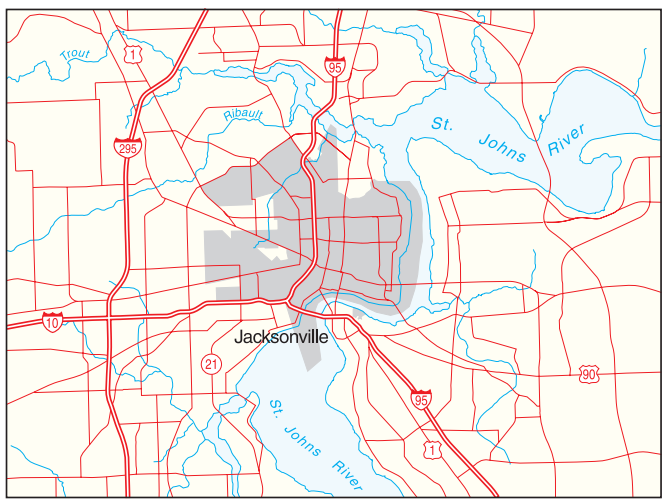
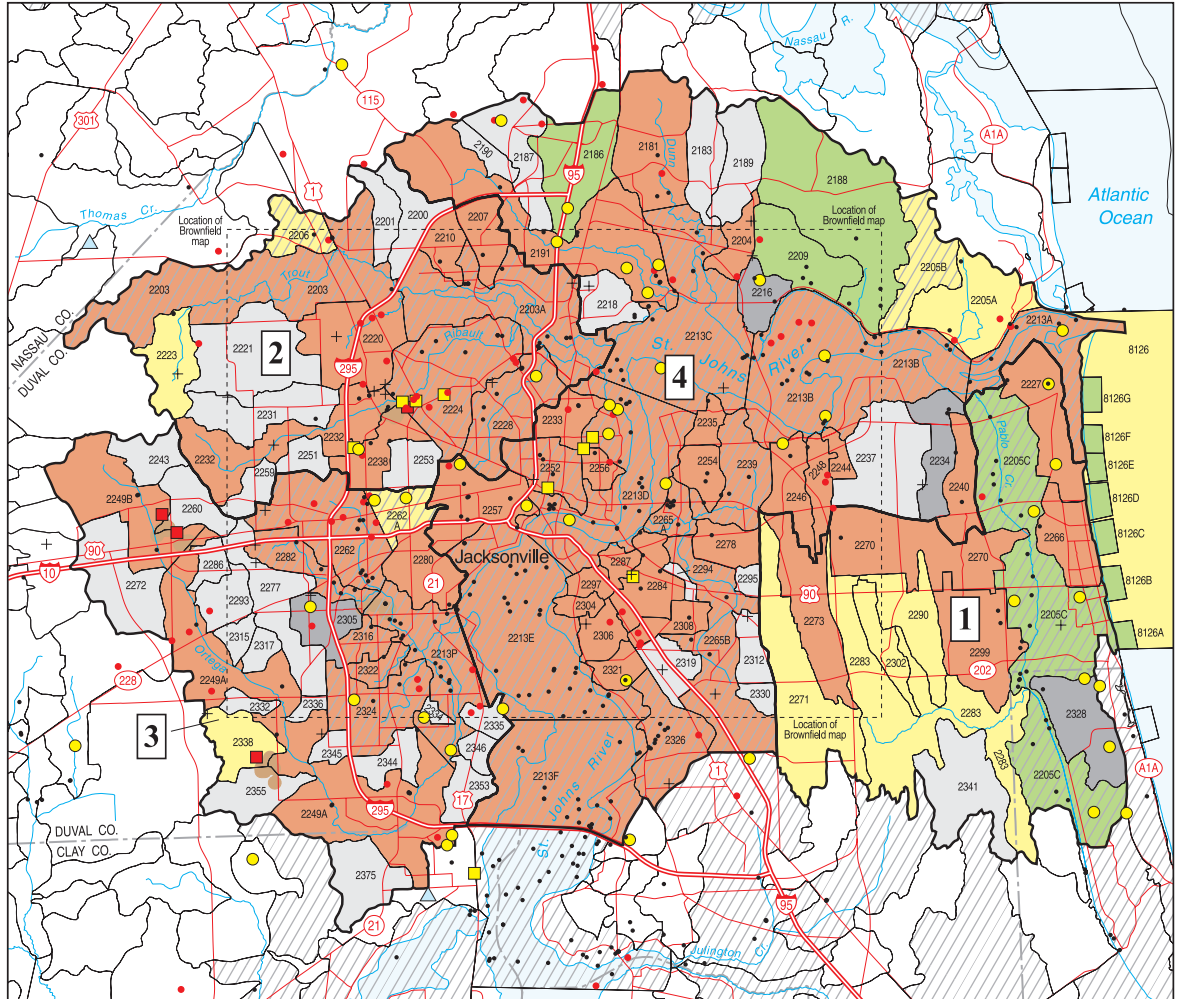


- STORET station
  - Domestic and industrial wastewater facility
  - Wastewater facility greater than 0.1 MGD
  - + Active landfills (Class I, II, III, C&D)
  - State-funded hazardous waste site
  - Superfund hazardous waste site
  - ▲ Named springs
  - ▲ Areas of known ground water contamination
  - Planning unit boundaries
  - Waterbody identification boundaries
  - ▨ 303d listed waters
  - Category 1
  - Category 2
  - Category 3a
  - Category 3b
  - Category 3c
  - Category 3d
  - Category 4b
  - Category 5
- Note: Features from legend not shown on this planning unit map were not reported as being present.
- 0 4 8 Mi.



- 1 Intracoastal Waterway Unit
- 2 Trout River Unit
- 3 Ortega River Unit
- 4 North Main Stem Unit

Brownfields in Duval County  
Scale same as main map

Figure 3.10: Composite Map of the Urban Planning Units, Including the 1998 303(d) List, Planning List and Verified List Waters, and Potential Pollution Sources